

LAST GENERATOR

connect to life seamlessly



DIESEL GENERATORS

LIM SERIES

www.lastgenerator.com

Model Number: LIM 660
Fuel type: Diesel



| VOLTAGE | PHASE | HZ | STANDBY RATING | | PRIME RATING | | POWER FACTOR |
|-----------|-------|----|----------------|-----|--------------|-----|--------------|
| | | | kVA | kW | kVA | kW | |
| 400 / 230 | 3 | 50 | 660 | 528 | 600 | 480 | 0,8 |

RATINGS DEFINITIONS

Prime Rating: These ratings are applicable for supplying continuous electrical power (at variable load) in lieu of commercially purchased power. There is no limitation to the annual hours of operation and this model can supply 10% overload power for 1 hour in 12 hours.

Standby Rating: These ratings are applicable for supplying continuous electrical power (at variable load) in the event of a utility power failure. No overload is permitted on these ratings. The alternator on this model is peak continuous rated (as defined in ISO 8528-3).

Standard Reference Conditions: Standard reference conditions 25°C (77°F) Air Inlet Temp, 100m (328 ft) A.S.L. 30% relative humidity.

ENGINE

| | |
|---|---------------------|
| Engine manufacturer | Fpt Iveco |
| Engine model | C16 TE1W |
| Oil capacity including tubes, filters (L) | 32 |
| Standby Power (kW) | 580 |
| Prime Power (kW) | 540 |
| Injection Type and System | Direct |
| Governor type | Mechanical |
| Battery Capacity (A) | 2 x 105 |
| Cooling System | Liquid |
| Total coolant capacity (L) | 38 |
| Cycle | 4 Stroke |
| Bore, mm | 135 |
| Stroke, mm | 150 |
| Displacement (lt) | 17 |
| Aspiration | Naturally aspirated |
| Rated speed, rpm | 1500 |

ALTERNATOR

| | |
|----------------------------|--------------------|
| Alternator manufacturer | Maranello |
| Alternator model | M660 |
| Frequency (Hz) | 50 |
| Voltage (V) | 230/400 |
| Phase | 3 |
| Connection type (standard) | Star |
| Total Harmonic Content | < %2 |
| Insulation | H Class |
| Voltage regulator | A.V.R (Electronic) |
| Efficiency (%) | 94 |

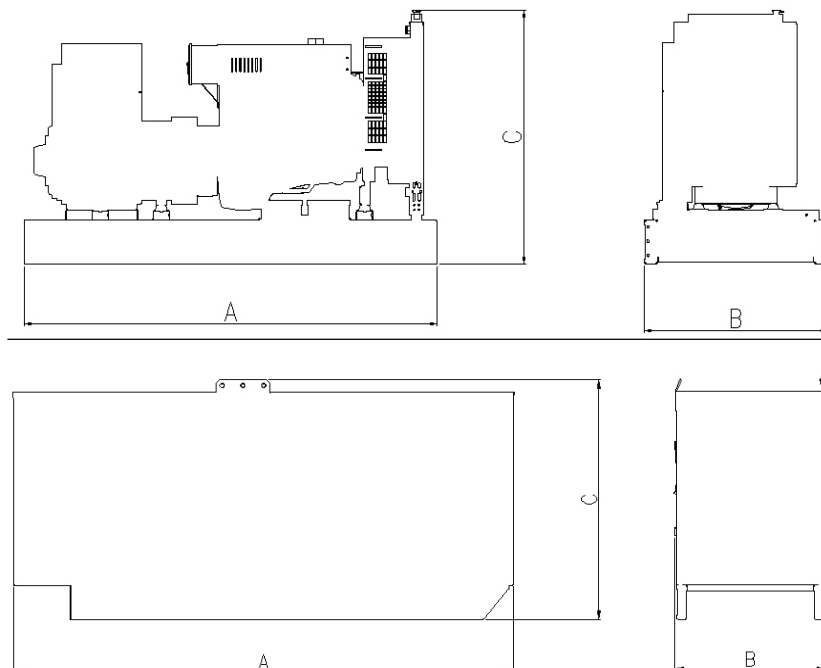
FUEL FLOW

| | |
|-------------------------------|-------|
| Fuel Consumption 50% PRP l/h | 82,2 |
| Fuel Consumption 75% PRP l/h | 100,8 |
| Fuel Consumption 100% PRP l/h | 122,6 |

Fuel consumption data at full load with diesel fuel with specific gravity of 0.85 and conforming to BS2869: 1998, Class A2.

DIMENSIONS

| | Open | Enclosed |
|--------------------|------|----------|
| Length (mm) A | 3500 | 4600 |
| Width (mm) B | 1800 | 1800 |
| Height (mm) C | 2170 | 2810 |
| Weight (kg) | 4190 | 5150 |
| Tank Capacity (lt) | 800 | 800 |



GENERATOR SET CONTROL

WEB BASED DATAKOM D-300

| | |
|------------------------------|--------------------------------|
| AMF unit | J1939-CANBUS |
| Geo-locating through GSM | Free PC software: Rainbow Plus |
| ATS unit | RS-232 (2400-57600baud) |
| Remote start controller | USB Device |
| Manual start controller | Internet Central Monitoring |
| Engine controller | SMS message sending |
| Remote display panel | E-mail sending |
| 4-band GPRS modem (optional) | Modbus RTU |
| GPS support (RS-232) | |



The D-300 is a cost effective, modern technology genset controller ready for internet monitoring.

Its main advantages are multifunctionality, support for multiple topologies, harmonic analysis and detailed power measurements.

Software features are complete with easy firmware upgrade through USB port. The Windows based PC software allows monitoring and programming through USB, RS-232 and GPRS. The Rainbow Scada web service allows monitoring and control of an unlimited number of gensets from a single central location.

STANDARD GENERATOR FEATURES

- Heavy duty water cooled diesel engine and brushless alternator
- Solid steel base frame with minimum 8 hours base tank and anti-vibration mountings
- AMF Control panel with digital-automatic main control module
- 50C Tropical radiator
- Battery charge redressor. Lead acid battery
- Residential type silencer
- Flexible exhaust compensator
- Block water heater unit
- All rotating parts are covered by metal mesh against damages
- Engine and alternator manufacturer test reports (if provided)
- Factory load, performance and function tests
- User Manual, Electrical Drawing and Gurantee certificate
- Special design for minimizing acoustic level 7 m. (23 ft) 67 dBA
- Galvanized steel construction further protected by polyester powder coat paint
- Black finish stainless steel locks and hinges
- Control panel viewing window in a lockable access door
- Emergency stop push button (red) mounted on enclosure exterior
- Lifting, drag and jacking points on base frame
- Radiator fill via removable, flush mounted rain cap fitted with compression seal