

LAST GENERATOR

connect to life seamlessly



DIESEL GENERATORS

LIM SERIES

www.lastgenerator.com

Model Number: LIM 145
Fuel type: Diesel



VOLTAGE	PHASE	HZ	STANDBY RATING		PRIME RATING		POWER FACTOR
			kVA	kW	kVA	kW	
400 / 230	3	50	145	116	130	104	0,8

RATINGS DEFINITIONS

Prime Rating: These ratings are applicable for supplying continuous electrical power (at variable load) in lieu of commercially purchased power. There is no limitation to the annual hours of operation and this model can supply 10% overload power for 1 hour in 12 hours.

Standby Rating: These ratings are applicable for supplying continuous electrical power (at variable load) in the event of a utility power failure. No overload is permitted on these ratings. The alternator on this model is peak continuous rated (as defined in ISO 8528-3).

Standard Reference Conditions: Standard reference conditions 25°C (77°F) Air Inlet Temp, 100m (328 ft) A.S.L. 30% relative humidity.

ENGINE

Engine manufacturer	Fpt Iveco
Engine model	N67 SM1
Oil capacity including tubes, filters (L)	17,2
Standby Power (kW)	125
Prime Power (kW)	114
Injection Type and System	Direct
Governor type	Mechanical
Battery Capacity (A)	2 x 105
Cooling System	Liquid
Total coolant capacity (L)	40,5
Cycle	4 Stroke
Bore, mm	104
Stroke, mm	132
Displacement (lt)	6,7
Aspiration	Naturally aspirated
Rated speed, rpm	1500

ALTERNATOR

Alternator manufacturer	Maranello
Alternator model	M150
Frequency (Hz)	50
Voltage (V)	230/400
Phase	3
Connection type (standard)	Star
Total Harmonic Content	< %2
Insulation	H Class
Voltage regulator	A.V.R (Electronic)
Efficiency (%)	94

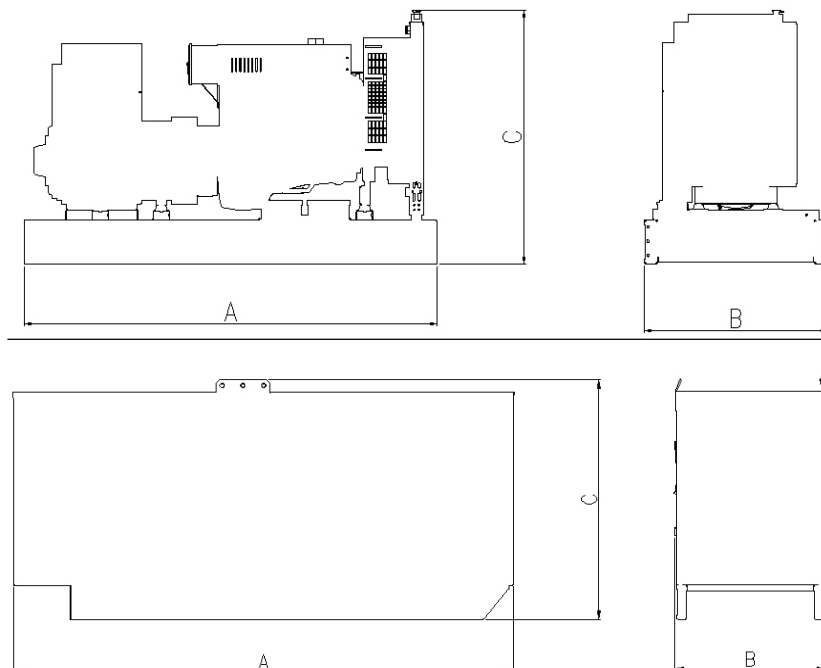
FUEL FLOW

Fuel Consumption 50% PRP l/h	24,1
Fuel Consumption 75% PRP l/h	29,3
Fuel Consumption 100% PRP l/h	32

Fuel consumption data at full load with diesel fuel with specific gravity of 0.85 and conforming to BS2869: 1998, Class A2.

DIMENSIONS

	Open	Enclosed
Length (mm) A	2100	2800
Width (mm) B	1100	1100
Height (mm) C	1650	1830
Weight (kg)	1600	2300
Tank Capacity (lt)	300	300



GENERATOR SET CONTROL

WEB BASED DATAKOM D-300

AMF unit	J1939-CANBUS
Geo-locating through GSM	Free PC software: Rainbow Plus
ATS unit	RS-232 (2400-57600baud)
Remote start controller	USB Device
Manual start controller	Internet Central Monitoring
Engine controller	SMS message sending
Remote display panel	E-mail sending
4-band GPRS modem (optional)	Modbus RTU
GPS support (RS-232)	



The D-300 is a cost effective, modern technology genset controller ready for internet monitoring.

Its main advantages are multifunctionality, support for multiple topologies, harmonic analysis and detailed power measurements.

Software features are complete with easy firmware upgrade through USB port. The Windows based PC software allows monitoring and programming through USB, RS-232 and GPRS. The Rainbow Scada web service allows monitoring and control of an unlimited number of gensets from a single central location.

STANDARD GENERATOR FEATURES

- Heavy duty water cooled diesel engine and brushless alternator
- Solid steel base frame with minimum 8 hours base tank and anti-vibration mountings
- AMF Control panel with digital-automatic main control module
- 50C Tropical radiator
- Battery charge redressor. Lead acid battery
- Residential type silencer
- Flexible exhaust compensator
- Block water heater unit
- All rotating parts are covered by metal mesh against damages
- Engine and alternator manufacturer test reports (if provided)
- Factory load, performance and function tests
- User Manual, Electrical Drawing and Gurantee certificate
- Special design for minimizing acoustic level 7 m. (23 ft) 67 dBA
- Galvanized steel construction further protected by polyester powder coat paint
- Black finish stainless steel locks and hinges
- Control panel viewing window in a lockable access door
- Emergency stop push button (red) mounted on enclosure exterior
- Lifting, drag and jacking points on base frame
- Radiator fill via removable, flush mounted rain cap fitted with compression seal